

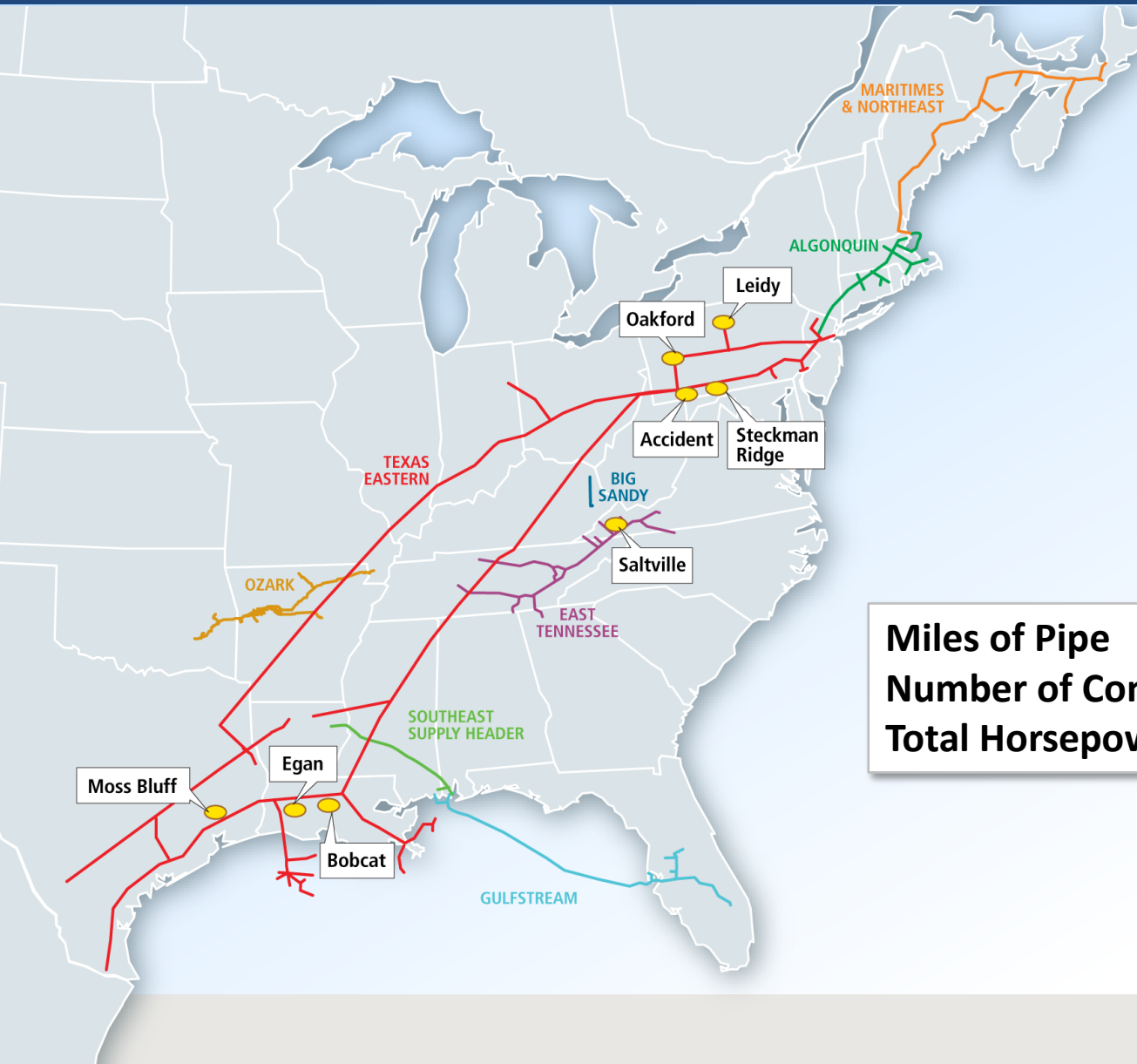


CBIA Energy Conference  
Natural Gas- Coming to Your Neighborhood Soon  
October 10, 2013  
Cromwell, Connecticut

Michael Dirrane  
Director, Northeast Marketing



# Spectra Energy U.S. Transmission Map



<b>Miles of Pipe</b>	<b>13,297</b>
<b>Number of Compressor Stations</b>	<b>129</b>
<b>Total Horsepower</b>	<b>2,147,488</b>

# Algonquin Gas Transmission Directly Connected Power Generators



## Algonquin Gas Transmission Directly Connected Power Generators

- Algonquin Gas Transmission Pipeline
- Compressor Station
- Texas Eastern Transmission Pipeline
- Maritimes & Northeast Pipeline

**Meter Key**  
#XXXX Delivery Meter

- 94 Northeast Energy - Bellingham
- 814 Bellingham Energy
- 801 Milford Power Plant
- 95 Ocean State Power
- 817 Lake Road Generating Company

- 81 National Grid - Potter Street
- 803 Fore River Power
- 834 Braintree Electric - BELD

- 806 Canal Electric

- 93 Dartmouth Power Association

- 816 Tiverton Power L.L.C. - Tiverton

- 90 Virginia Power - Brayton Pt.

- 812 Taunton Municipal - TMLP
- 815 Dighton Power L.L.C. - Dighton

- 87 Virginia Power - Manchester St.

- 810 NRG - Middletown
- 833 Kleen Energy - Middletown CT
- 836 GenConn - Middletown CT
- 820 Wallingford Energy Co.
- 831 CMEEC - Pierce Power - New Haven

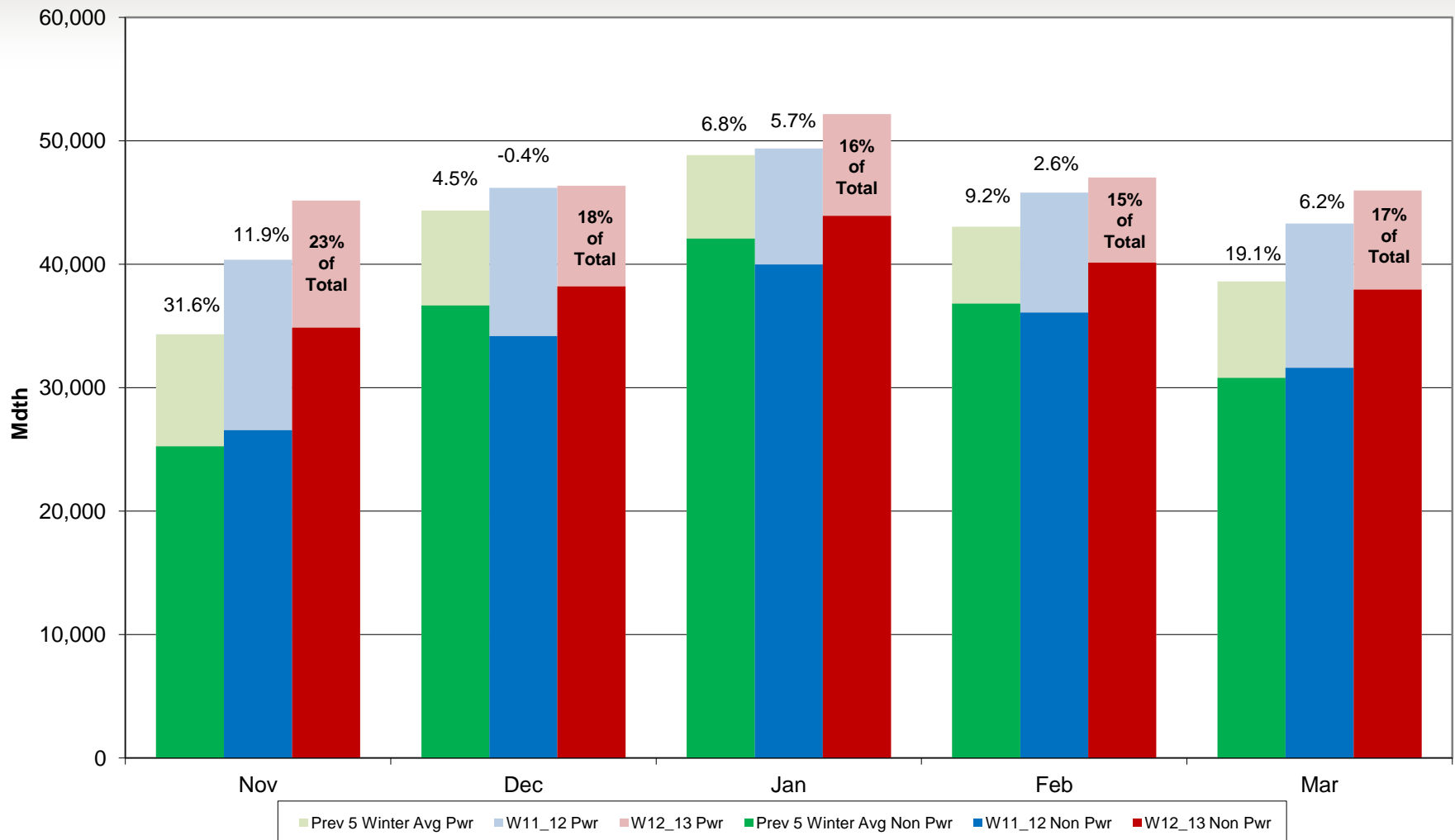
### Delivery Points – Directly Connected to Power Generators

Electric Plant / End User	Meter#	Capacity (MW)	12-Month Average	12-Month Peak
Bellingham Energy	814	523	31,396	82,717
Braintree Electric - BELD	834	115	1,366	13,536
Canal Electric	806	561	198	3,071
CMEEC - Pierce Power	831	96	215	11,778
Dartmouth Power Associates	93	68	3,069	15,446
Dighton Power L.L.C.	815	177	16,503	33,456
Fore River Power	803	837	94,342	134,031
GenConn	836	197	-	-
Kleen Energy	833	620	73,999	104,277
Lake Road Generating	817	844	89,919	132,414
Milford Power - Milford Power	801	171	6,312	30,466
National Grid - Potter Street	81	92	334	12,466
Northeast Energy Assoc. - Bellingham	94	337	11,286	59,376
NRG - Middletown	810	365	3,180	73,903
Ocean State Power	95	635	5,319	36,187
Taunton Municipal L.L.C.	812	110	1,893	15,720
Tiverton Power L.L.C.	816	279	32,069	41,550
Virginia Power - Brayton Point	90	446	6,621	69,365
Virginia Power - Manchester Street	87	510	61,259	87,437
Wallingford Energy Company	820	241	3,016	34,827

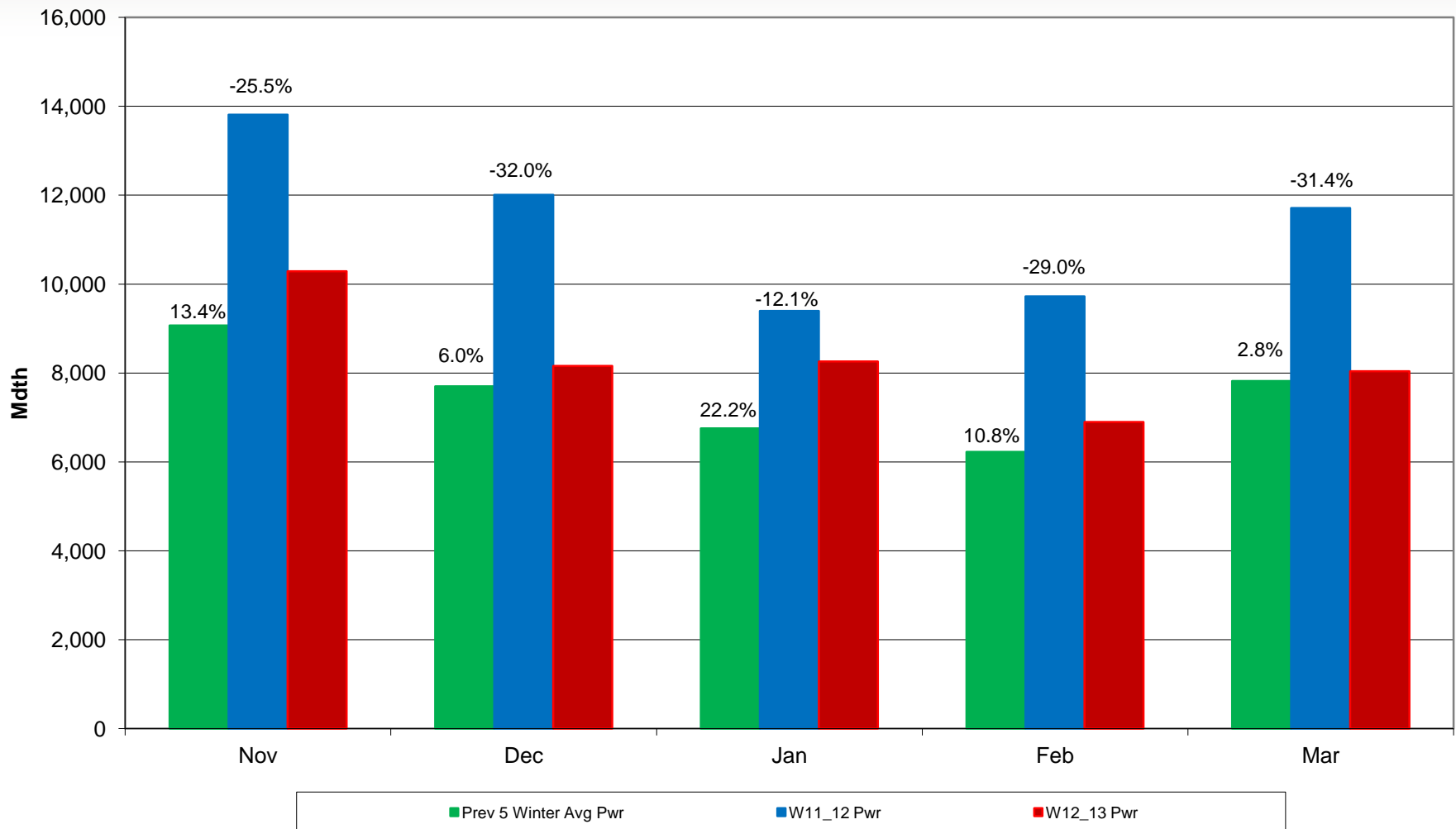
1202-16177 Aug-27-12

Algonquin Gas Transmission Company: Suite 300 – 890 Winter Street, Waltham, MA, 02451. Algonquin does not guarantee the accuracy of this map nor the title delineation thereon, nor does Algonquin assume any responsibility or liability for any reliance thereon.

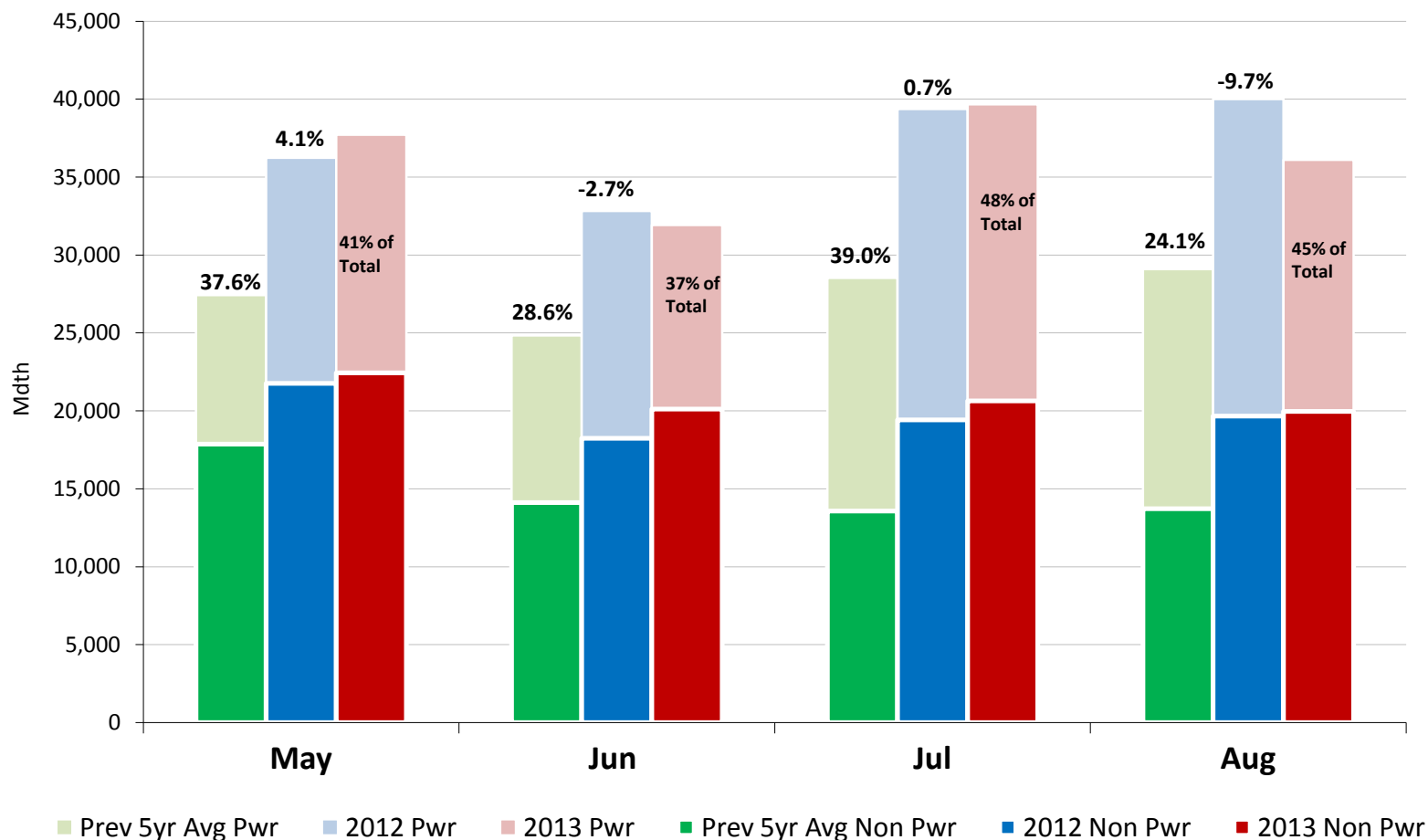
# Algonquin Gas Transmission Monthly Deliveries



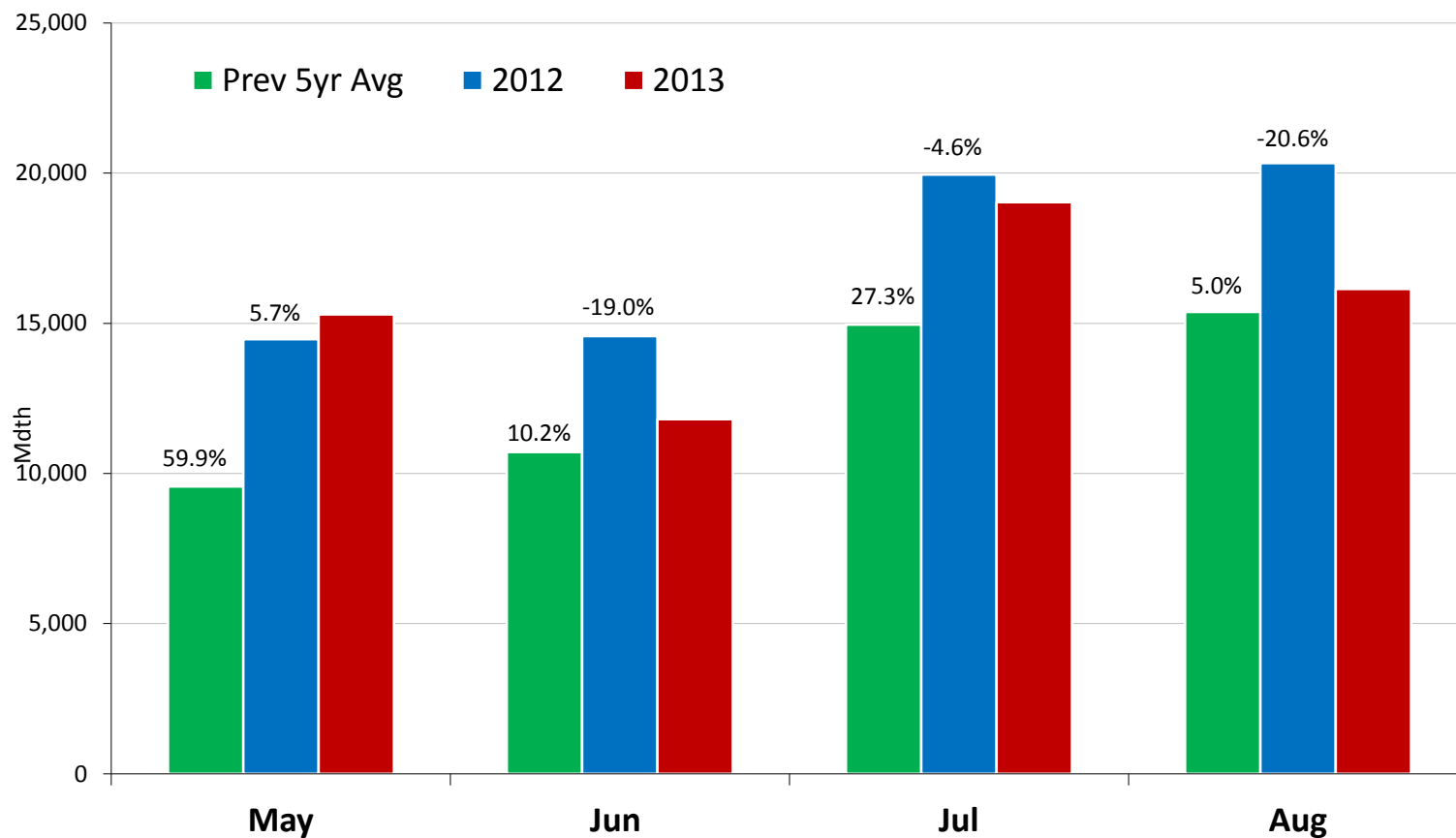
# Algonquin Gas Transmission Power Sector Monthly Deliveries



# Algonquin Gas Transmission Monthly Deliveries



# Algonquin Gas Transmission Power Plant Monthly Deliveries



# Algonquin Gas Transmission

## Number of Restrictions



<b>Location</b>	<b>W12-13</b>		<b>W11-12</b>		<b>W10-11</b>	
	Seal Only	Restrictions	Seal Only	Restrictions	Seal Only	Restrictions
Mahwah Mainline	0	6	9	5	5	26
Stony Point	2	134	6	28	9	71
Southeast	0	6	9	37	0	0
Oxford	39	78	0	0	0	0
Cromwell	61	84	20	107	19	23
Burrillville	0	0	1	3	21	1
Hubline East to West	0	0	0	0	0	0

### Definitions:

#### Seal Only:

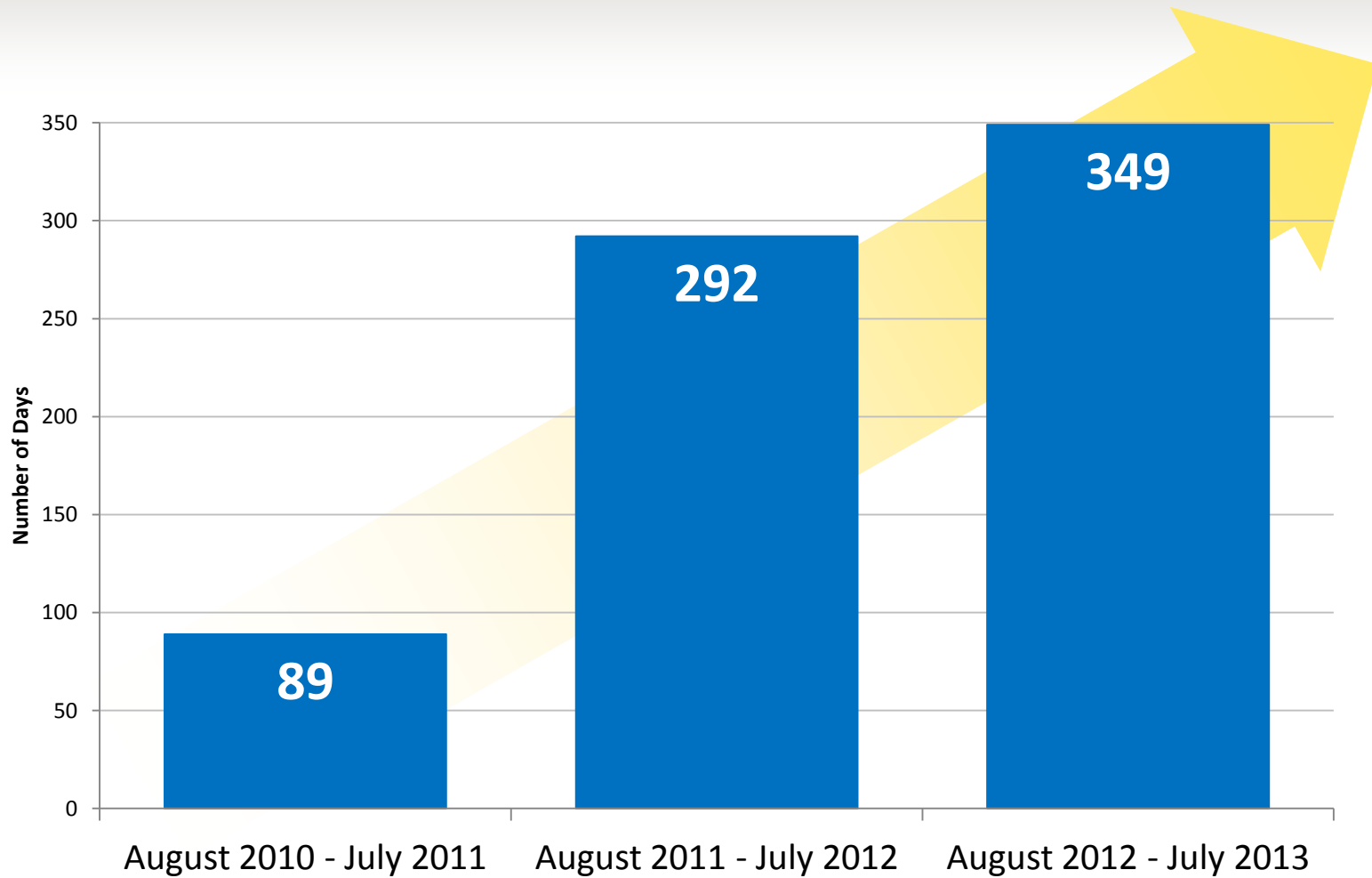
AGT did not reduce scheduled quantities at the close of the Timely Cycle. Due to a capacity constraint, however, AGT did not accept nominations in excess of available posted capacity.

#### Restrictions:

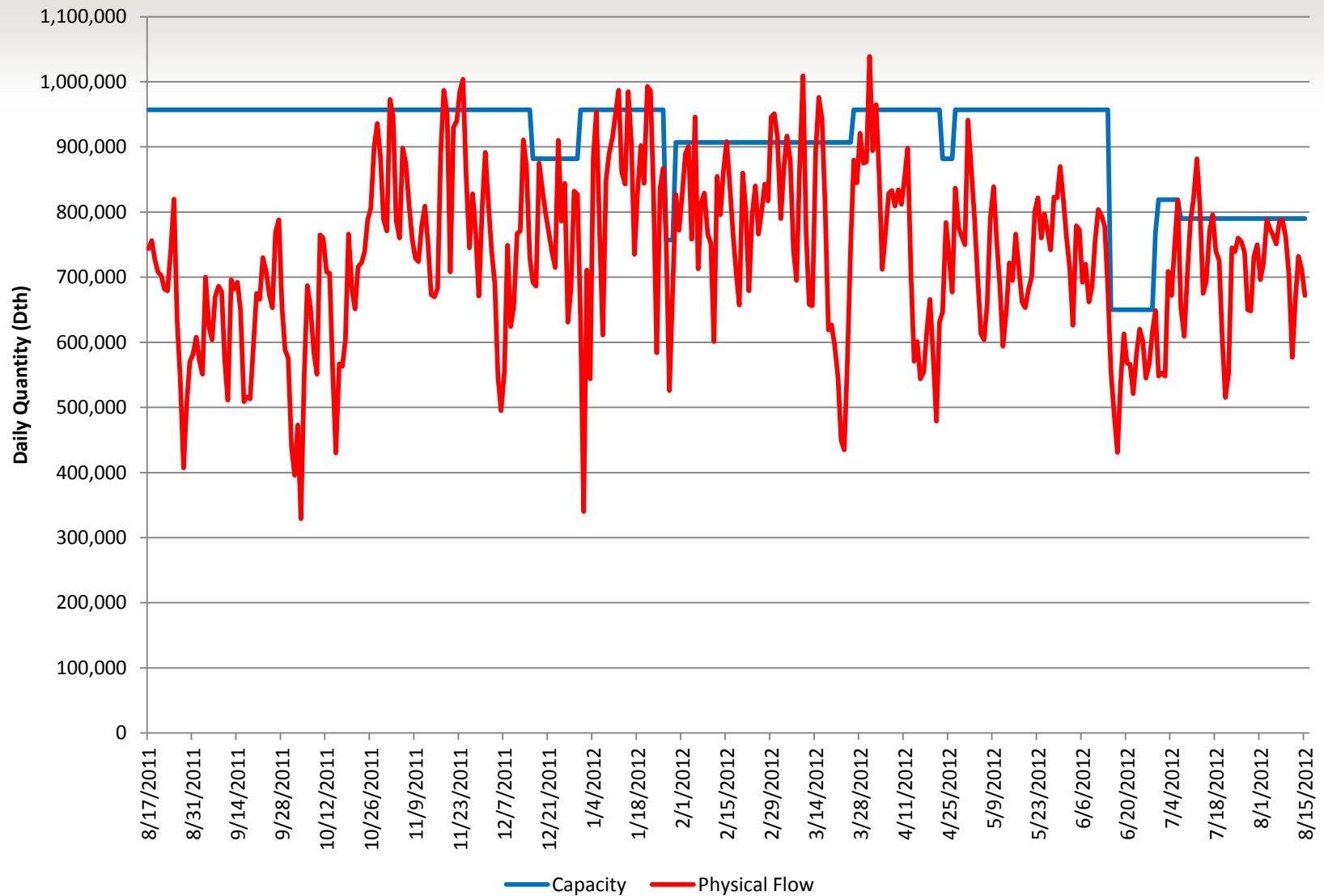
AGT reduced scheduled quantities to posted pipeline capacity at the close of the Timely Cycle in accordance with GT&C Section 24 of the AGT Tariff.



# Days with Zero Interruptible Capacity Available on Algonquin



# West to East Utilization - Cromwell Station



# Algonquin Gas Transmission Supply Diversity (MDth/d)



<i>Operator</i>	Sep 10 - Aug 11	Sep 11 - Aug 12	Sep 12 - Aug 13
Texas Eastern	520	340	356
Tennessee- Mahwah	141	240	242
Transco	43	65	42
Columbia Hanover	108	88	64
Millennium	248	400	479
<b>West End Supply</b>	<b>1060</b>	<b>1133</b>	<b>1183</b>
Maritimes	105	65	47
Everett	95	48	9
Northeast Gateway	0	0	0
Tennessee- Mendon	70	87	124
<b>East End Supply</b>	<b>270</b>	<b>200</b>	<b>180</b>

# Texas Eastern Transmission, LP

## Winter Season Supply Diversity (MMDth)



Operator	W 10/11	W11/12	W12/13
Lebanon Area (ANR, PEPL, TX Gas, REX)	101.0	48.7	26.6
REX – Clarington	54.1	55.8	47.5
Texas Eastern 24"	21.4	12.9	13.9
Texas Eastern 30"	281.7	202.6	106.8
Appalachian Production	35.6	117.1	242.0
Other TE Mainline Meters	134.4	124.2	119.6
<b>Total</b>	<b>628.2</b>	<b>561.3</b>	<b>556.4</b>

# Texas Eastern Appalachian Shale Supply Interconnect Program

## 58 Requests In-Service & Under Agreement

(requested tap & posted M&R capacity)

**12.9 Bcf/d**

Current Appalachian Shale Supply

1.5 Bcf/d

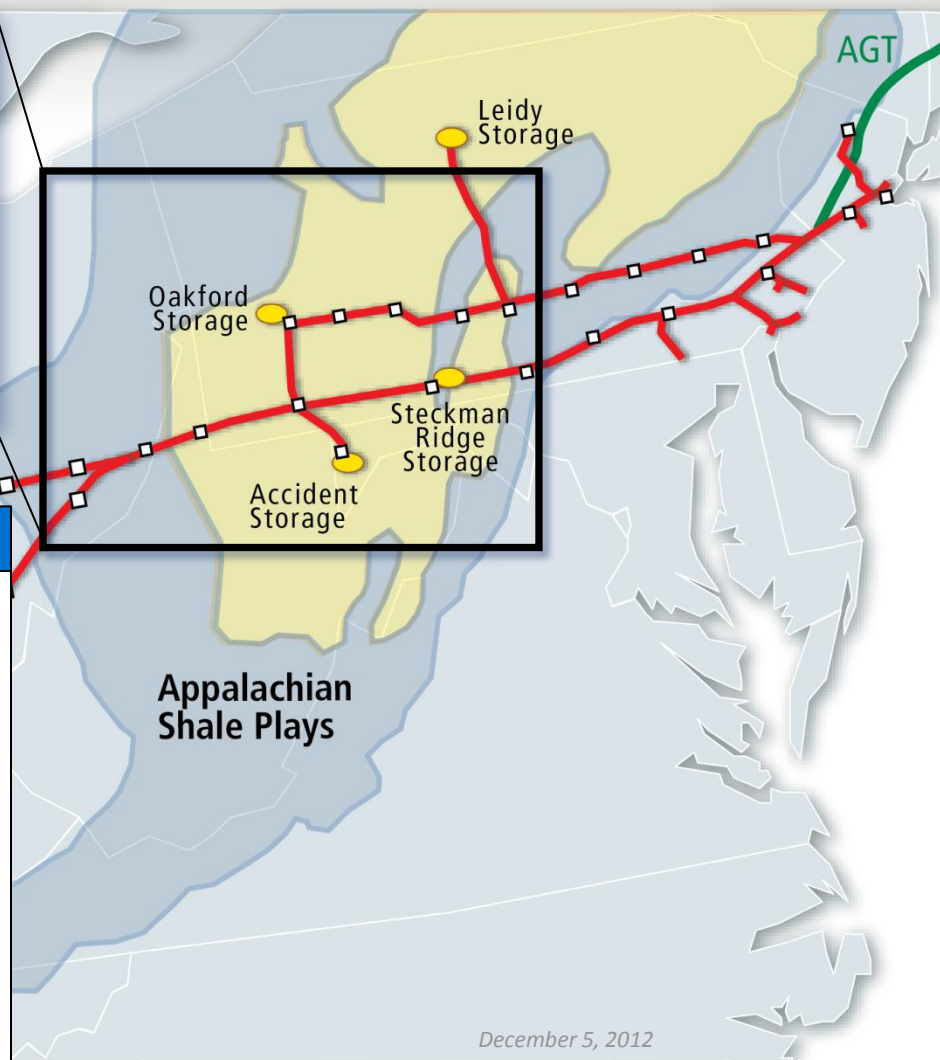
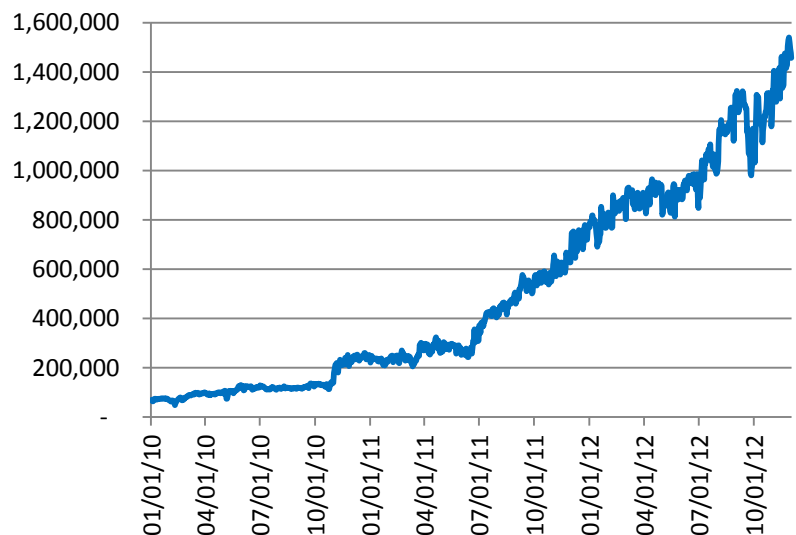
31 In-Service (posted M&R capacity)

5.9 Bcf/d

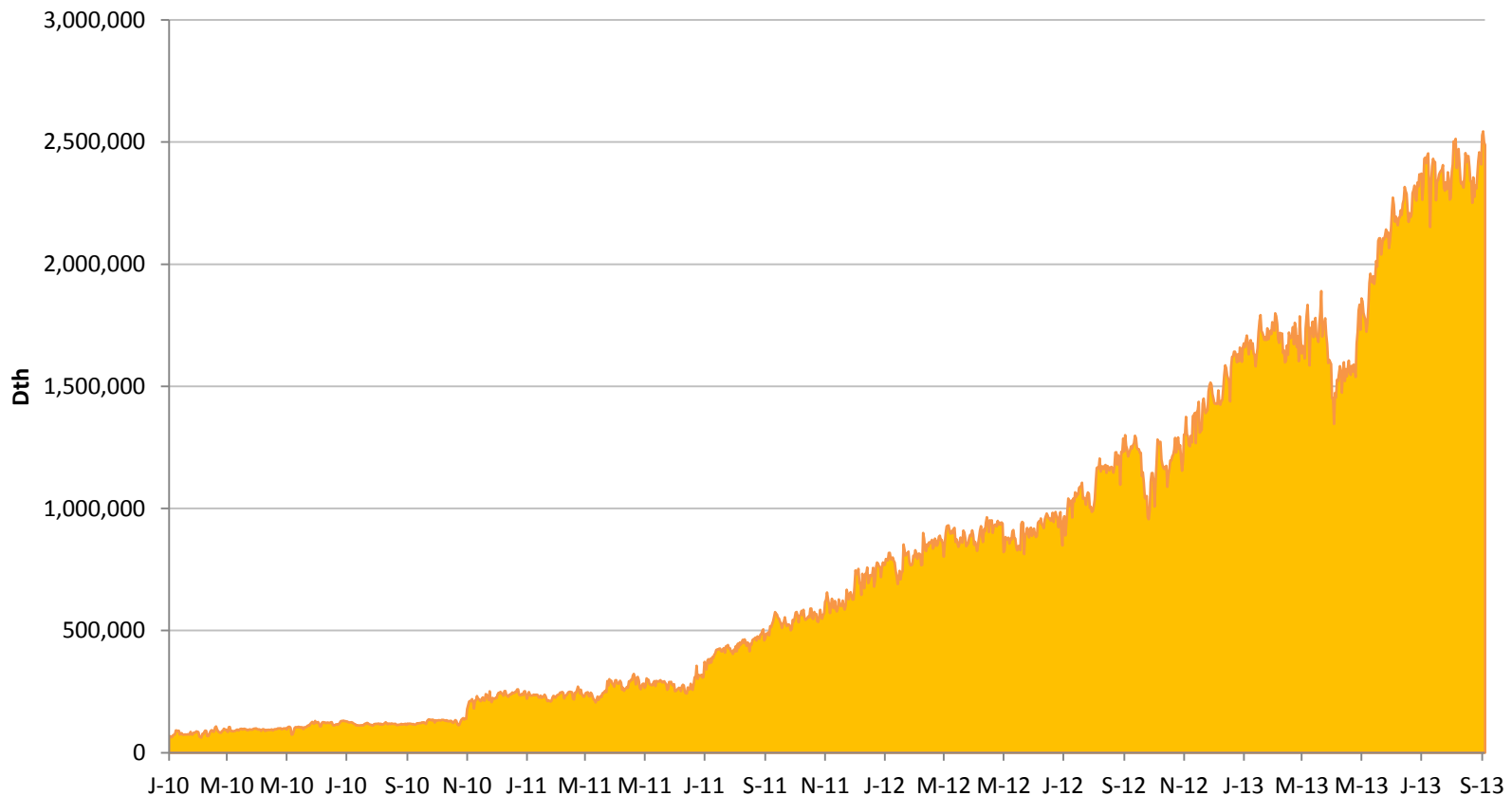
27 In Progress & Under Agreement  
(Scheduled 2013 In-Service)

7.0 Bcf/d

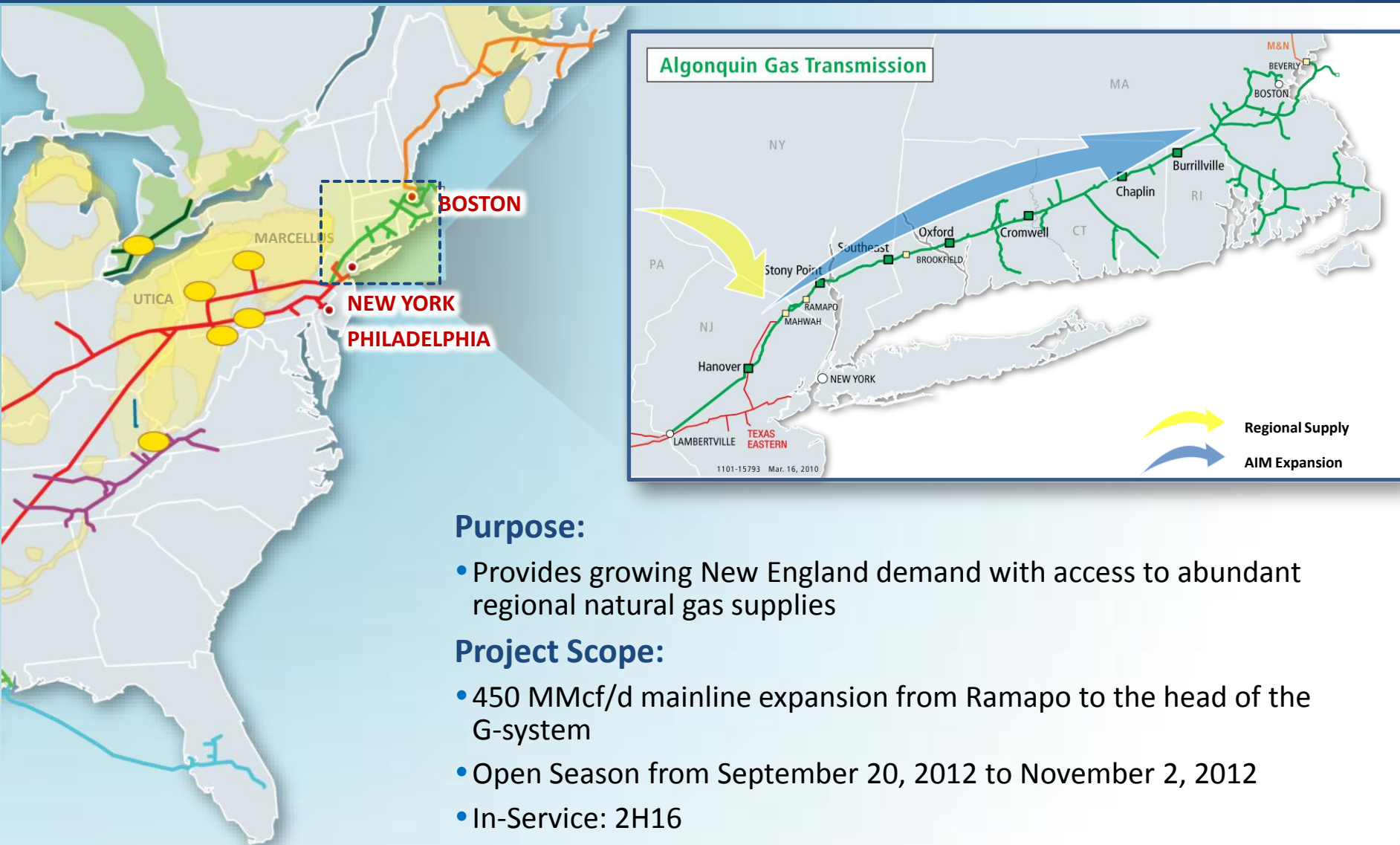
## Texas Eastern Appalachian Shale Supply Growth



# Texas Eastern Transmission, L.P. Marcellus Shale Supply Growth



# Algonquin Incremental Market Expansion (AIM)



# NJ-NY Expansion Project Overview

- NJ-NY Expansion Project is a more than \$1 billion privately funded expansion of Spectra Energy's existing Texas Eastern Transmission and Algonquin Gas Transmission pipeline systems
  - **Scope:** Approximately 15.5 miles of new pipeline and 4.8 miles of replacement pipeline from Linden, NJ to Manhattan; new meter and regulating stations; modifications to existing facilities
  - **Capacity:** Up to 800 million dekatherms per day
  - **Projected Completion:** Fourth Quarter 2013 per FERC Certificate to meet Con Ed's 2013/2014 winter energy needs
  - **Annual Energy Savings:** \$700 million in the New Jersey and New York region



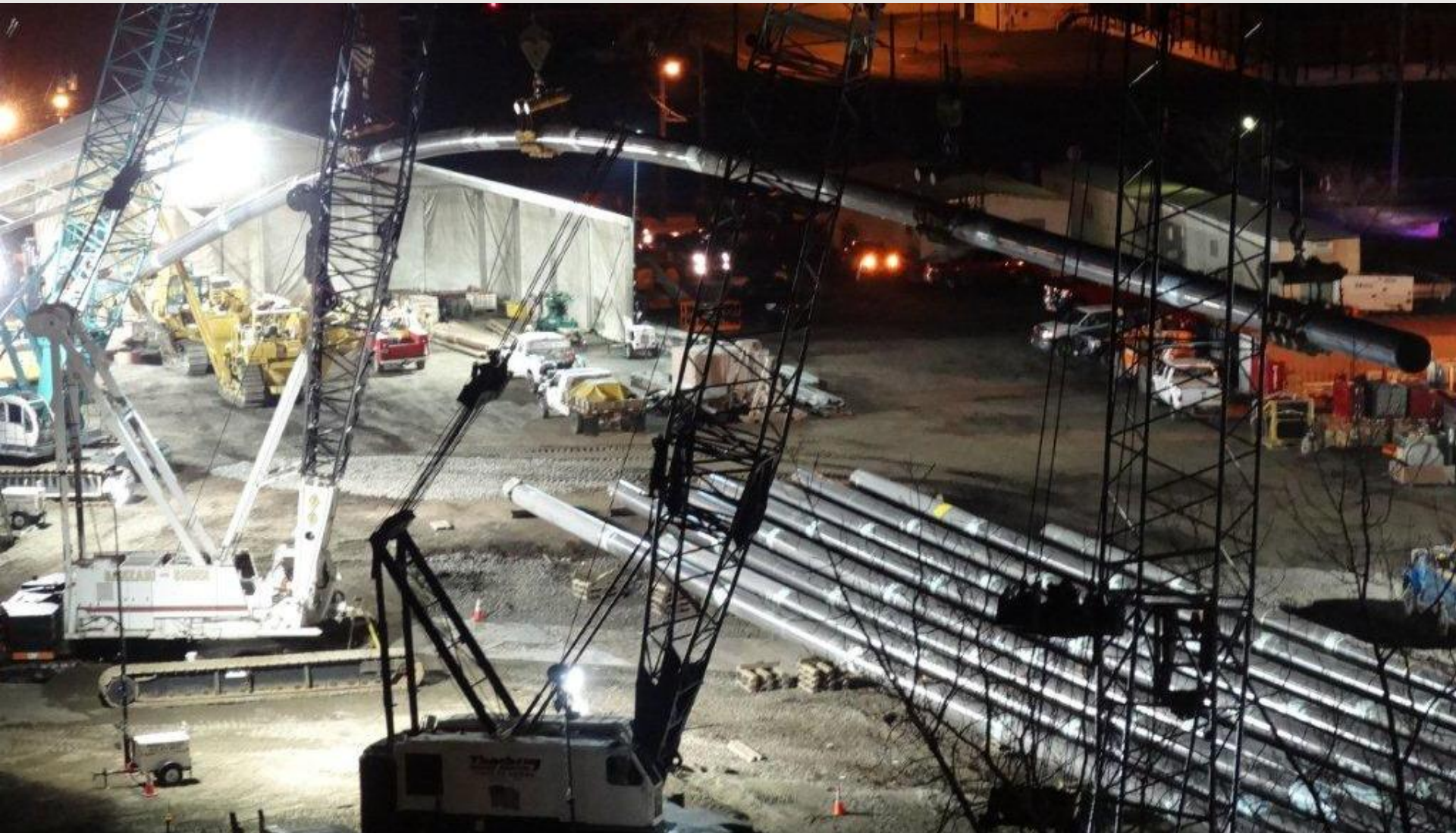


# New Jersey – New York Expansion Project





# New Jersey – New York Expansion Project

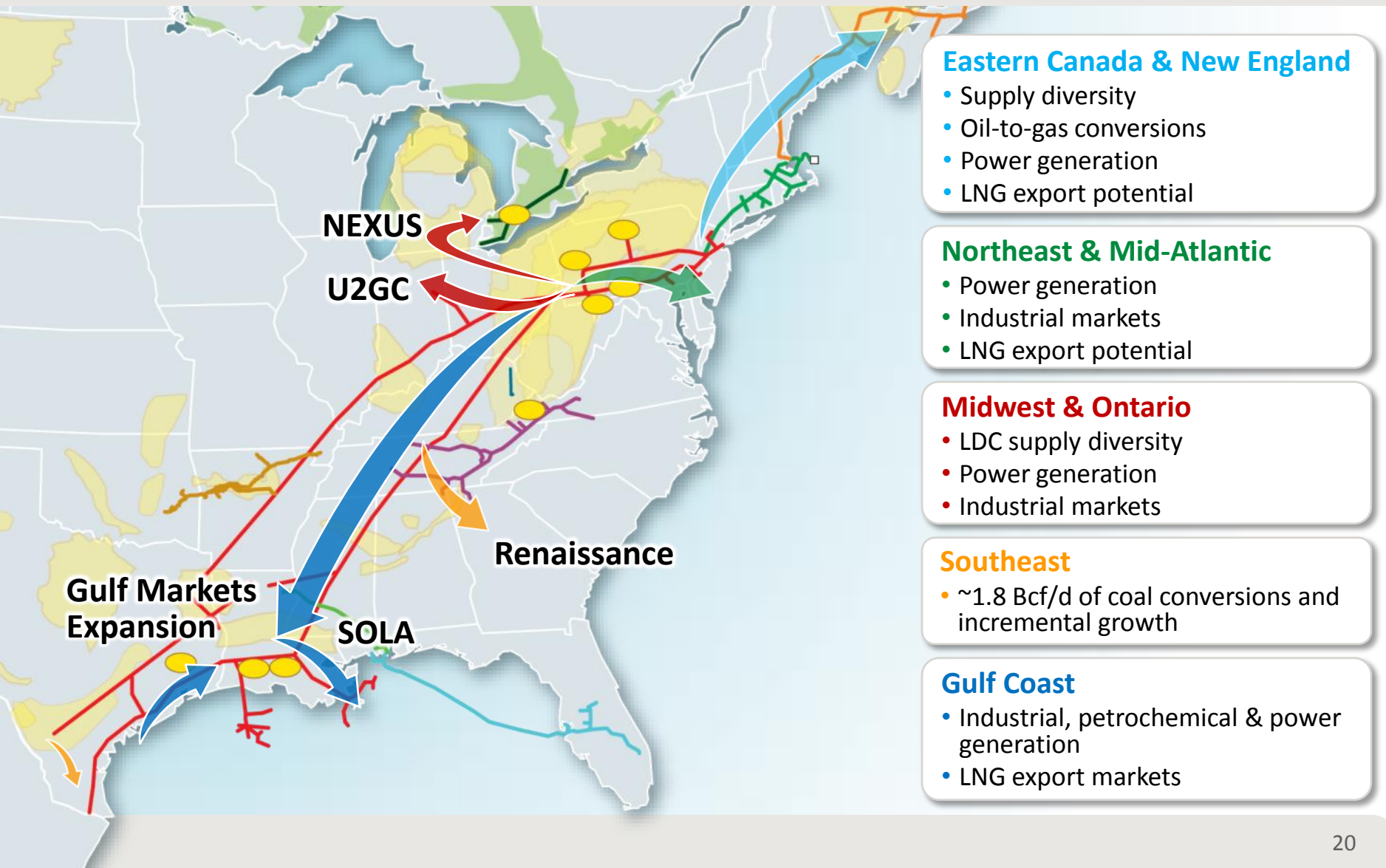


# New Jersey – New York Expansion Project





# U.S. Transmission – Future Growth Opportunities



# Daily Average Power Gen Load Aug - July

