



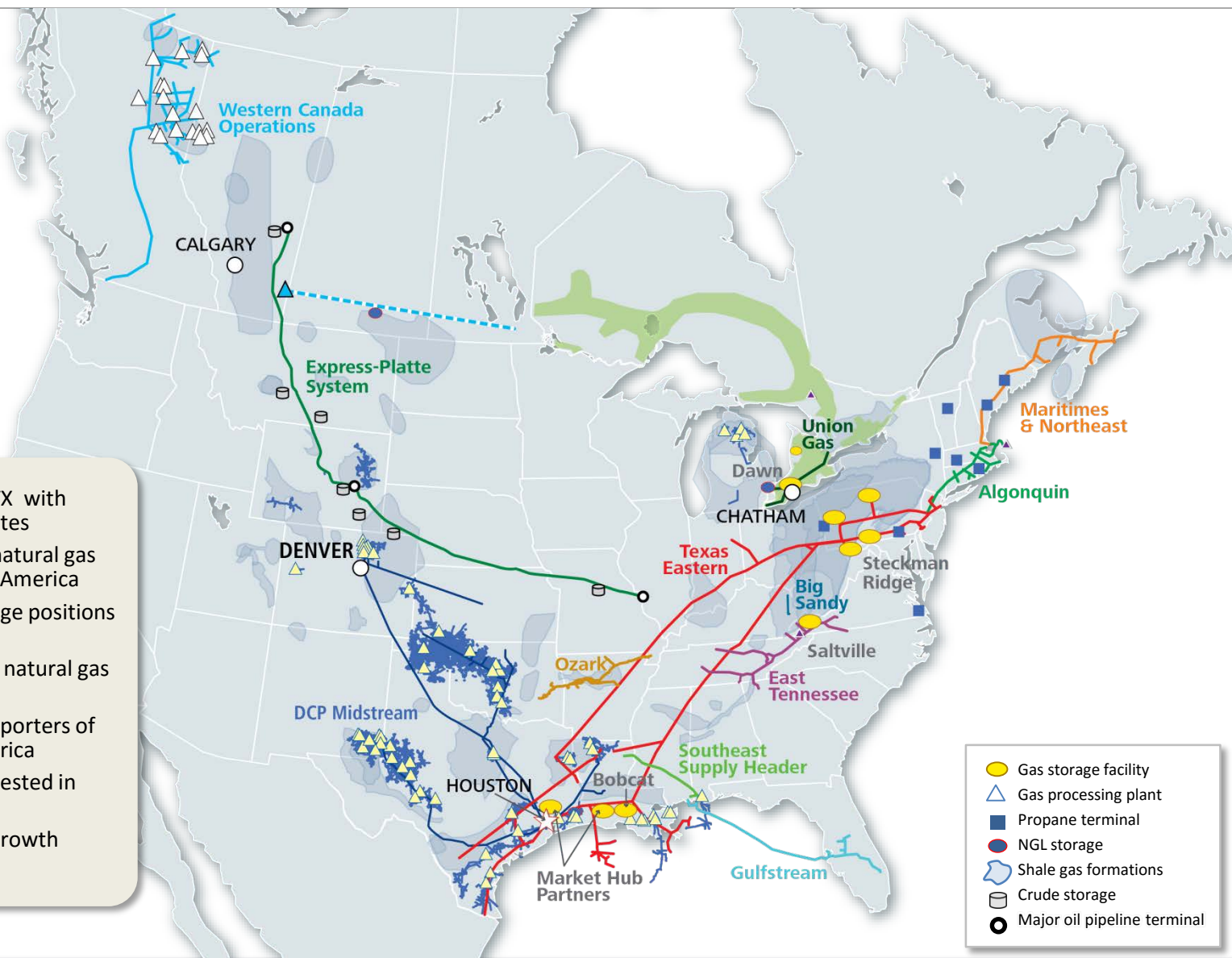
CPES Meeting
April 13, 2016
Cromwell, CT

Mike Dirrane
Director, Northeast Marketing

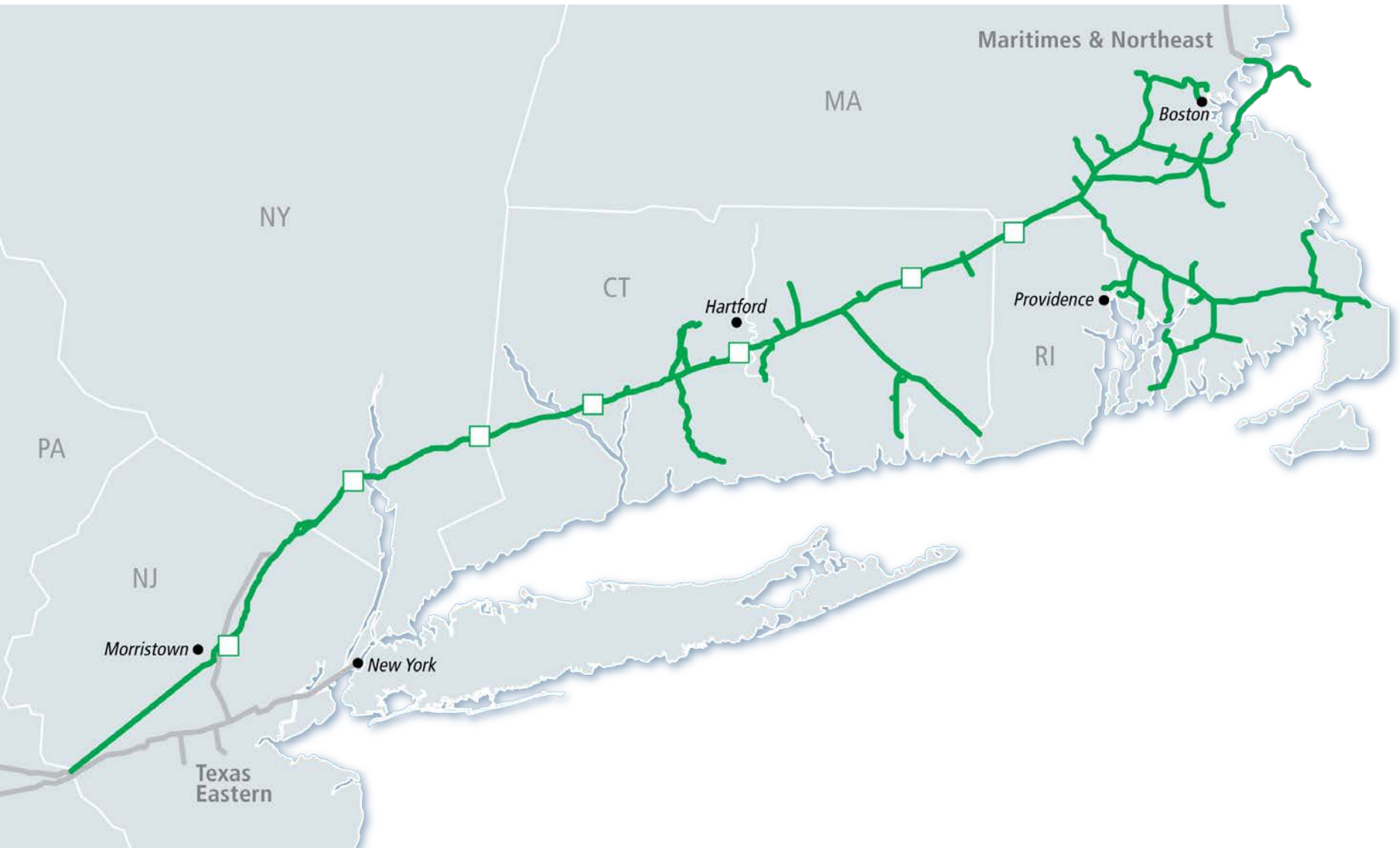


Spectra Energy's Portfolio of Assets

- Based in Houston, TX with operations in 30 states
- Transports 15% of natural gas consumed in North America
- One of largest storage positions in North America
- Largest producer of natural gas liquids in U.S.
- One of largest transporters of crude in North America
- Over **\$10 Billion** invested in system since '07
- **\$35 Billion** in new growth projects by '20



Algonquin Gas Transmission

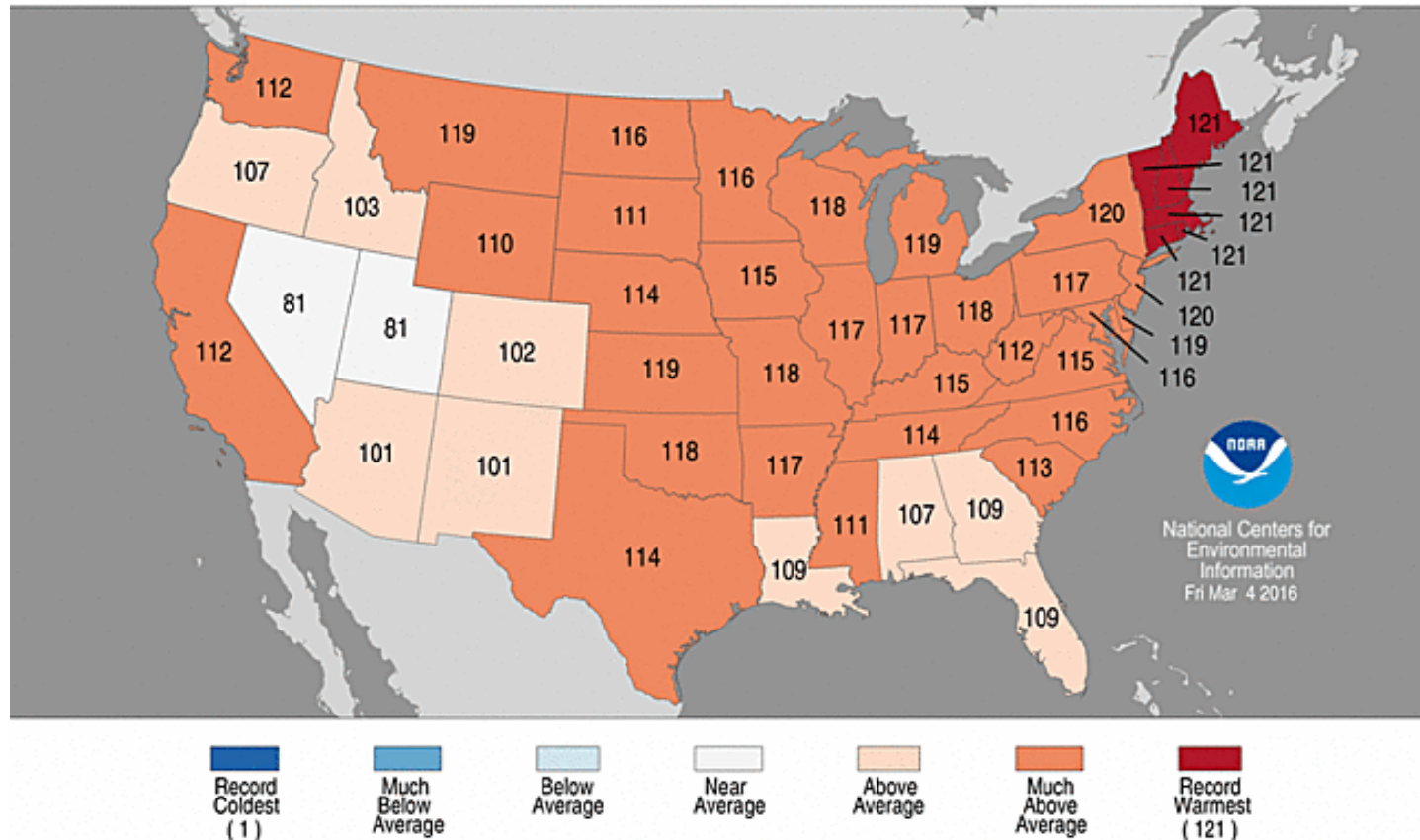


Very Warm Market Area: Dec - Feb

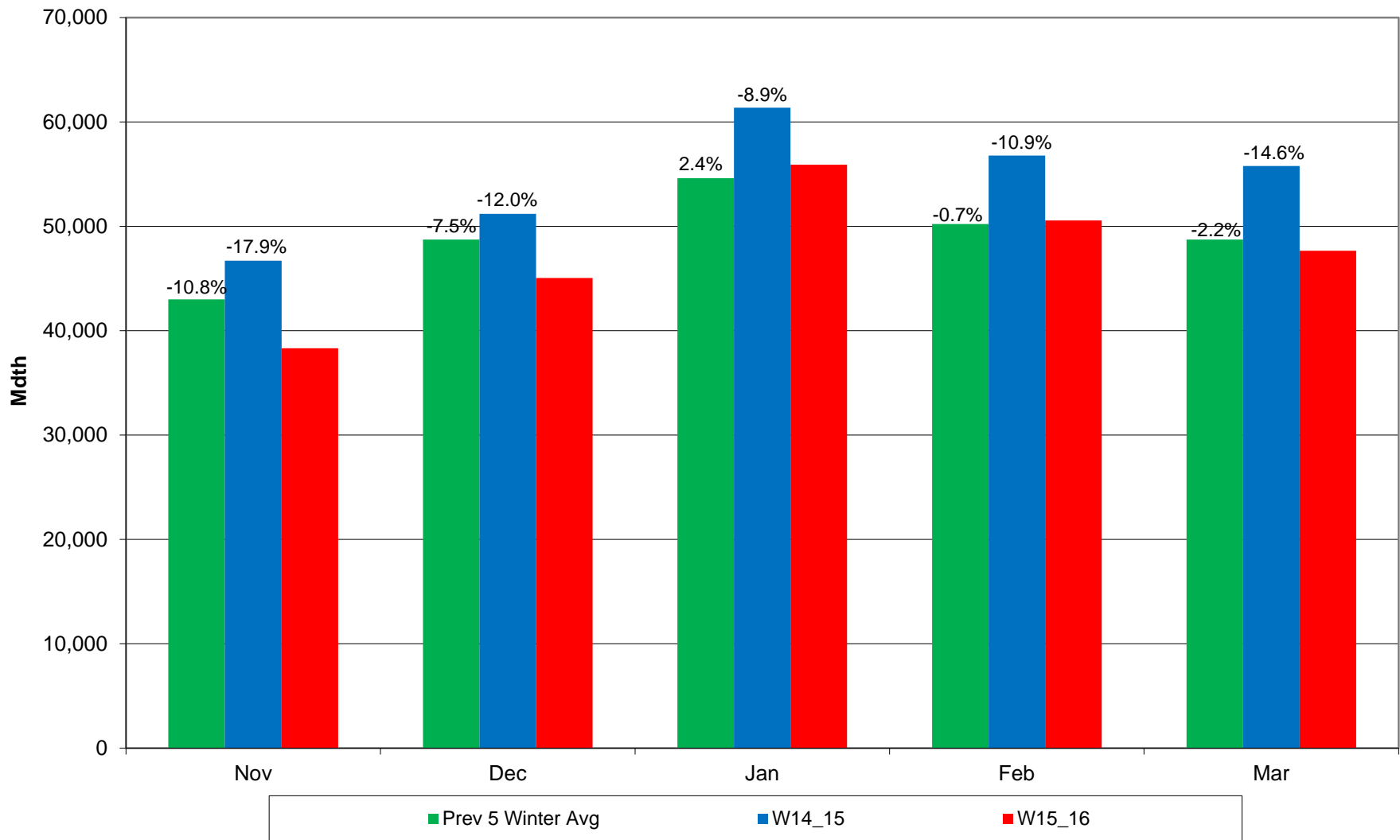
Statewide Average Temperature Ranks

December 2015–February 2016

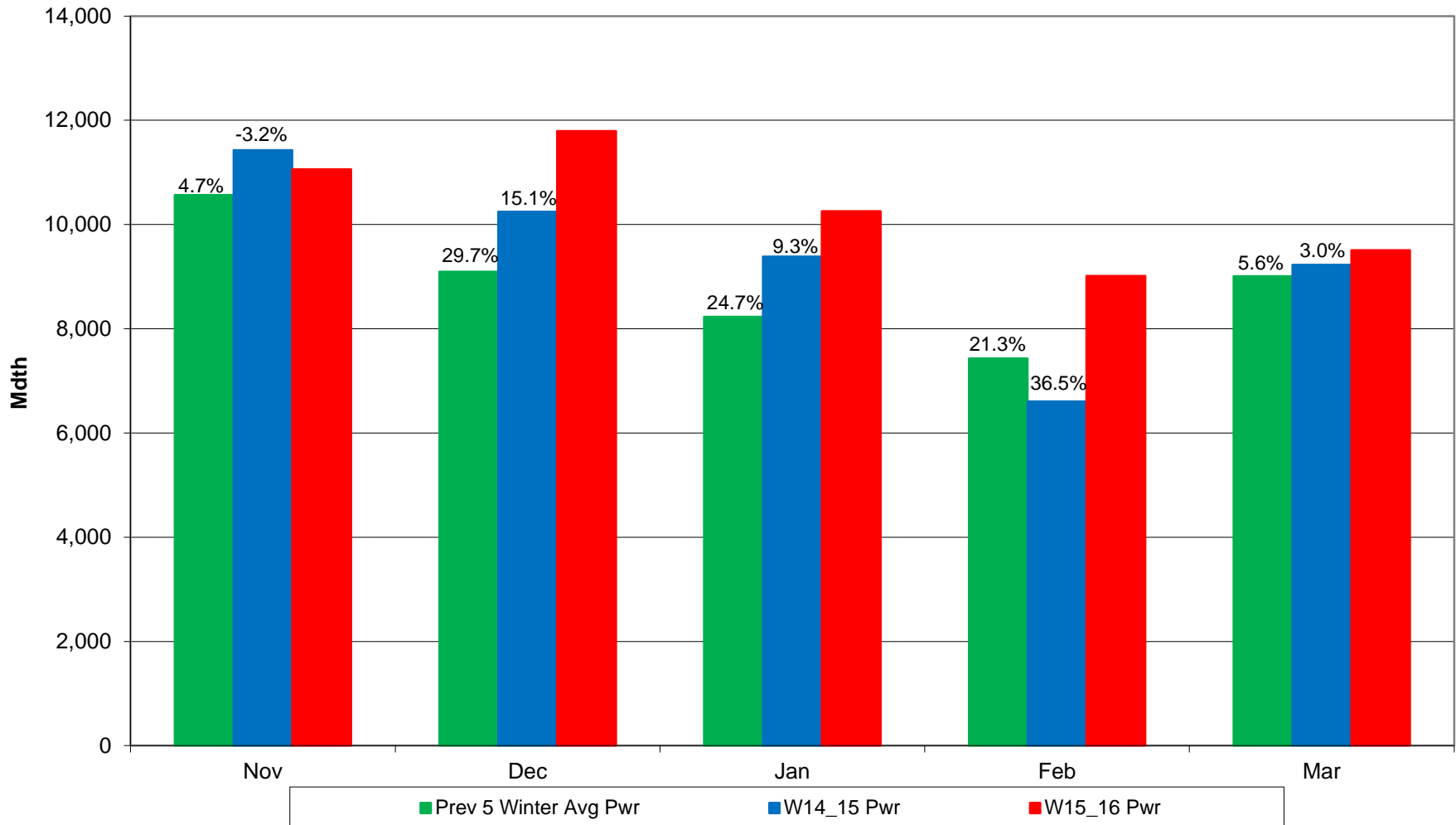
Period: 1895–2016



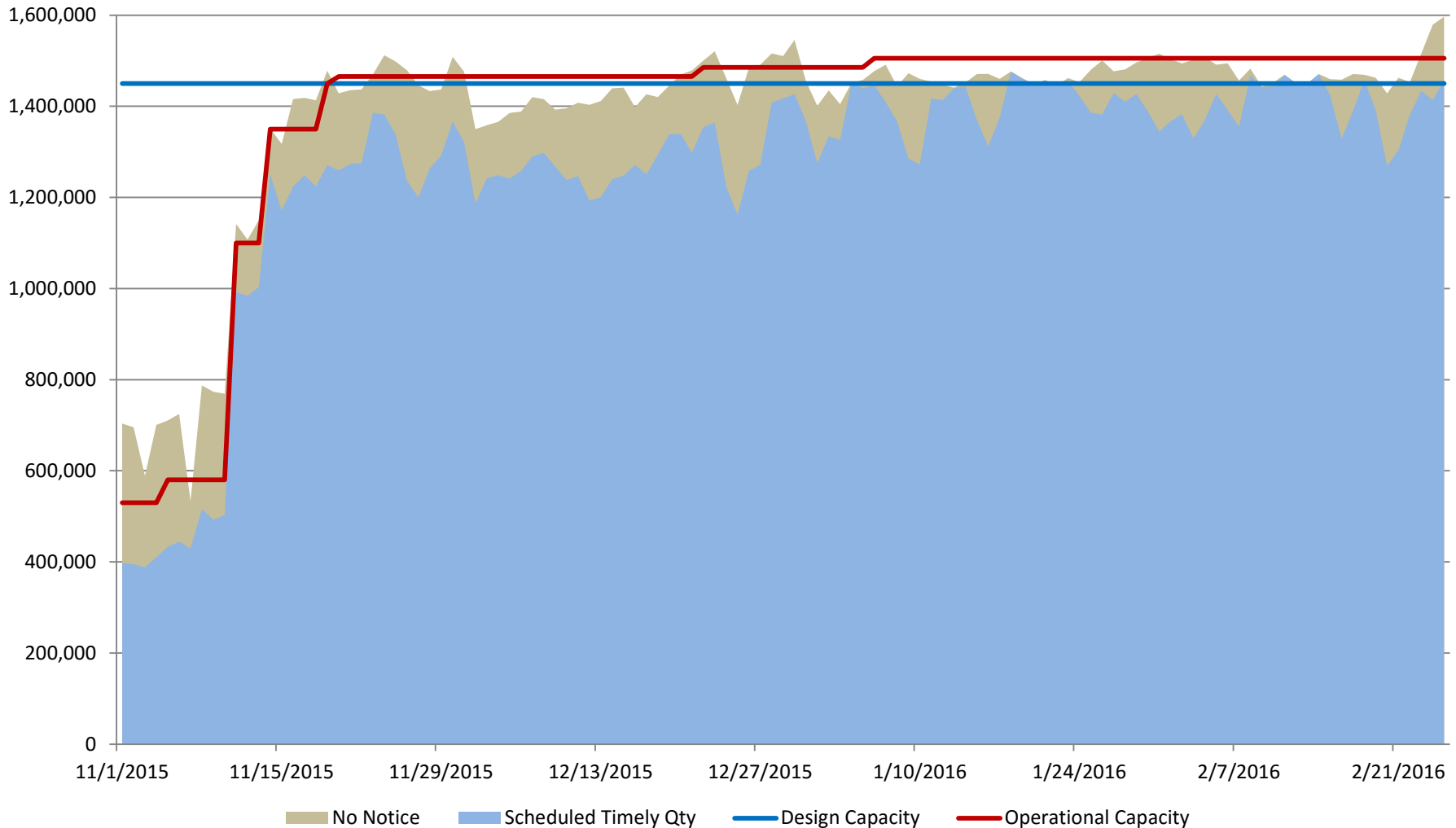
Algonquin Gas Transmission Monthly Deliveries



Algonquin Gas Transmission Monthly Power Load Deliveries



Algonquin Gas Transmission West to East – Stony Point Compressor Station



Algonquin Incremental Market AIM Expansion

Purpose:

- Provide growing New England demand with access to abundant regional natural gas supplies

Project Scope:

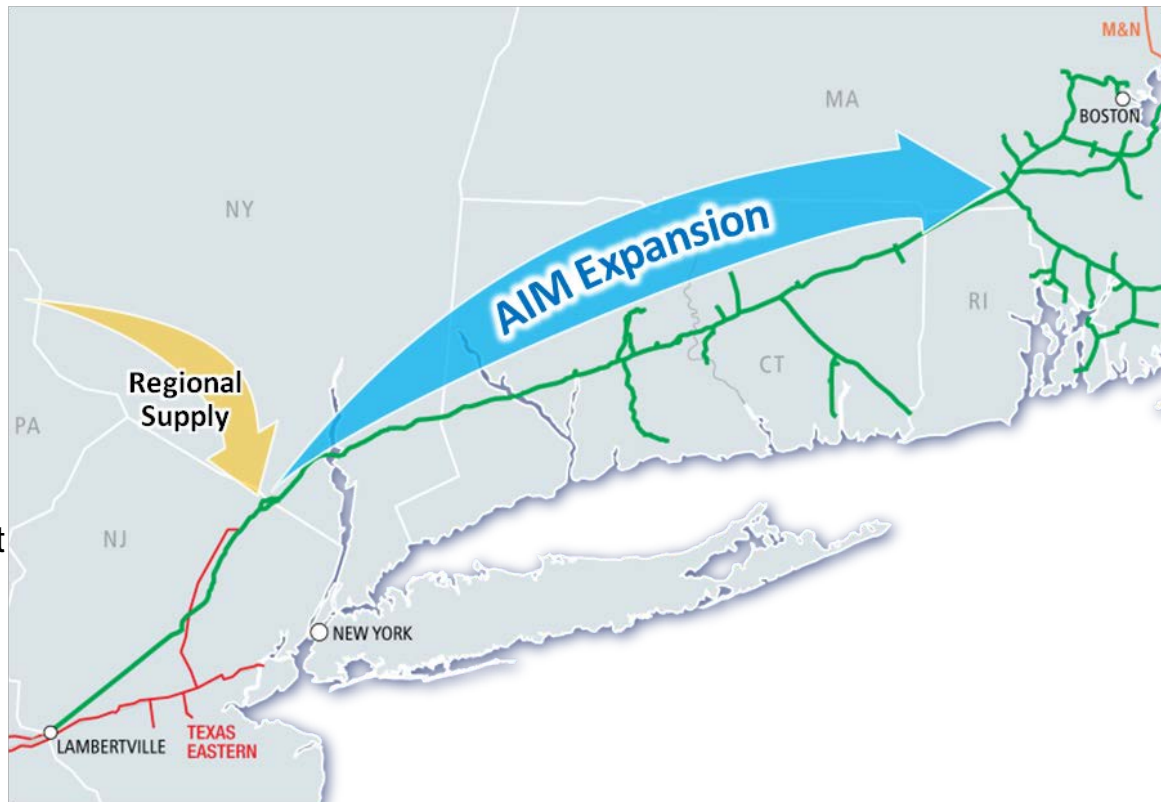
- Providing ~340 MMcf/d of additional capacity to move Marcellus production to Algonquin City Gates
- CapEx: \$1 B

Customers (15 year terms):

- LDC Affiliates of UIL Holdings, Northeast Utilities, National Grid, NiSource
- City of Norwich
- Middleborough

Project Status:

- Pre-filed with FERC Jun 2013
- Filed FERC application Feb 2014
- Expect FERC certificate Q1 2015
- Commence construction Q2 2015
- In-service Nov 2016



Preliminary Facilities:

- Take up segments of 26" pipeline and replace with 42"; one segment of 36" loop; reinforcement of existing laterals; construction of new lateral
- Horsepower additions and modifications at 5 existing compressor stations
- New meter station installations and modifications to existing meter stations

Cromwell Compressor Station Construction



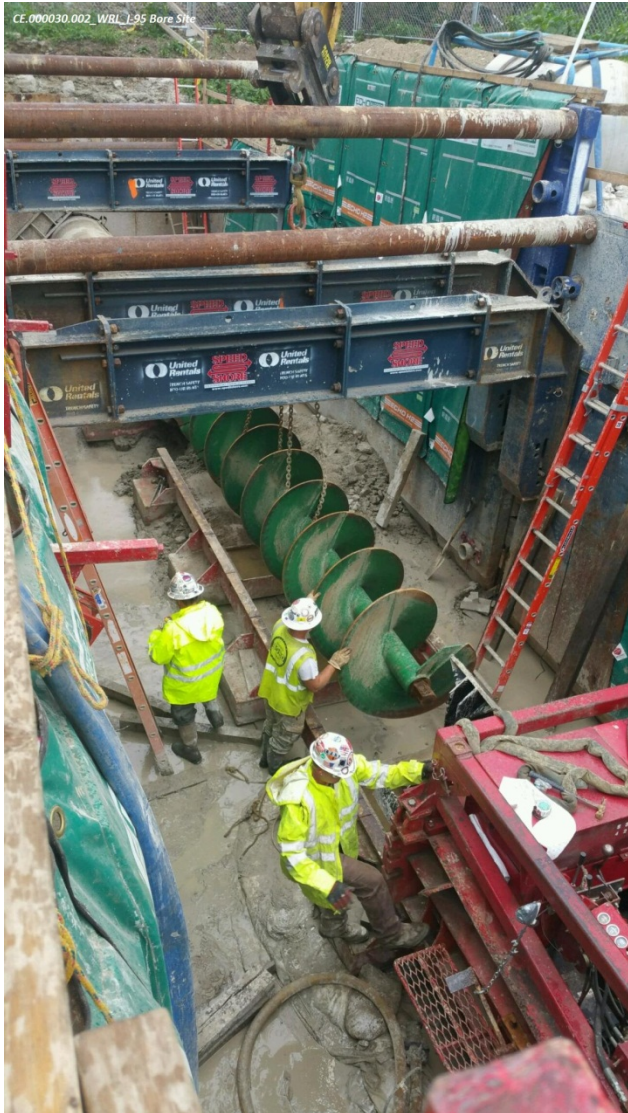
Cromwell CS Building



Cromwell Pipeline Loop Construction



West Roxbury Lateral



I-95 Road Bore

Burrillville Compressor Station



CT Meter Stations



9-18-15_CE.000030.007_Montville
_Setting the meter tubes inside
the station



9/17/15CE.000030.007G
uilford CT.Bond crew
putting grout around
hold down clamps



9.17.2015_CE.000030.007_Willimantic_All Buildings set into place

Atlantic Bridge

Purpose:

- Increased pipeline capacity will allow abundant, economic supplies of natural gas from regional production to flow to the New England and Atlantic Canada markets

Project Scope:

- Further expansion of the Algonquin and Maritimes Pipelines with receipt/ delivery points ranging from Mahwah to AGT city gates and into the Maritimes Pipelines
- CapEx: \$750 MM to \$1 B

Customers:

- Agreements signed for some LDCs and industrial shippers
- Late stage negotiations with other parties in New England and Atlantic Canada

Project Status:

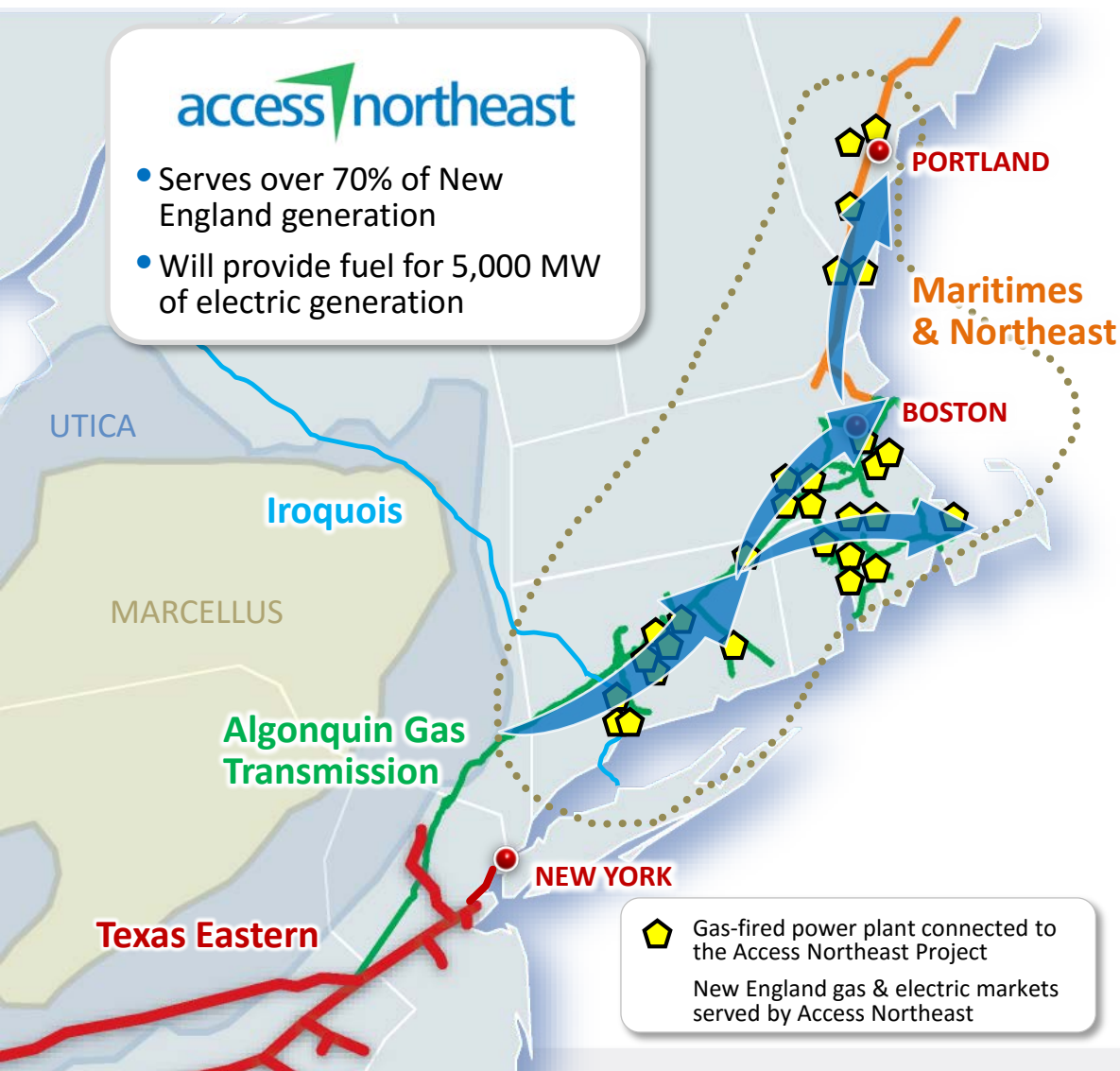
- Expected pre-filing with FERC Jan 2015
- Estimated in-service Nov 2017



Preliminary Facilities

- New compressor station near Weymouth, MA
- Continued take-up and relay of the AGT mainline
- Looping and take-up and relay of laterals in MA
- Compressor station unit upgrades in CT
- Meter station modifications

Access Northeast is a Tailored Solution for the Region's Electric Energy Needs



- Upgrades Existing Pipelines
 - Innovative
 - Cost effective
 - Environmentally responsible approach
- Utilizes local natural gas storage
- Increases natural gas supplies to power plants by 0.9 Bcf /day
 - Ensuring energy security
 - Lowering electric costs
 - Reducing carbon emissions
- Provides rapid response capability – a first of its kind service to electric generators that will:
 - Meet peak winter day needs
 - Back stop intermittent solar and wind-renewable power

Benefits of Expanding Existing Spectra Energy Pipeline Infrastructure

- ✓ Scalability brings relief ASAP
- ✓ Connects supply directly to end use markets
- ✓ Reliability
- ✓ Provides least stakeholder impact

